

外壳 / Hood & Housing



外壳部分 / Hoods & Housings Contents

规格Size	页码Page
3A外壳Hoods/Housings	P11-01~P11-11
10A外壳Hoods/Housings	P12-01~P12-02
16A外壳Hoods/Housings	P13-01~P13-02
32A外壳Hoods/Housings	P14-01~P14-02
6B外壳Hoods/Housings	P15-01~P15-10
10B外壳Hoods/Housings	P16-01~P16-13
16B外壳Hoods/Housings	P17-01~P17-21
24B外壳Hoods/Housings	P18-01~P18-22
32B外壳Hoods/Housings	P19-01~P19-06
48B外壳Hoods/Housings	P20-01~P20-02
HC外壳Hoods/Housings	P21-01~P21-08



外壳部分 / Hoods & Housings Contents

3A 塑料外壳 IP65 / Size 3A Plastic Hoods & Housings IP65		
材料	Material	聚碳酸酯 Polycarbonate
颜色	Colour	灰白 Light grey(RAL 7032)
联锁元件	Locking element	
-联锁方式	-Lever type	塑料弹性压合 Lever,plastic
-材料	-Material	聚酰胺 Polyamide
密封元件	Hoods & Housings seal	NBR
适用温度范围	Limiting temperatures	-40...+125°C
阻燃等级	Flammability acc. to UL 94	V0
防护等级(联锁状态,EN60529)	Degree of protection acc.to DIN EN 60 529 for coupled connector	IP65
塑料外壳 IP65 / Plastic Hoods & Housings IP65		
材料	Material	PA+20GF
颜色	Colour	深蓝色 Prussian blue
联锁元件	Locking element	
-联锁方式	-Lever type	塑料弹性压合 Lever,plastic
-材料	-Material	PA+20GF
密封元件	Hoods & Housings seal	NBR
适用温度范围	Limiting temperatures	-40...+125°C
阻燃等级	Flammability acc. to UL 94	V0
防护等级(联锁状态,EN60529)	Degree of protection acc.to DIN EN 60 529 for coupled connector	IP65
3A 金属外壳 IP65 / Size 3A Metal Hoods & Housings IP65		
材料	Material	铸锌 zinc die-cast
颜色	Colour	灰色 Grey
联锁元件	Locking element	
-联锁方式	-Lever type	金属弹性压合 Lever
-材料	-Material	金属(铁)镀锌 metal galvanized/nickel plating
密封元件	Hoods & Housings seal	NBR
适用温度范围	Limiting temperatures	-40...+125°C
阻燃等级	Flammability acc. to UL 94	V0
防护等级(联锁状态,EN60529)	Degree of protection acc.to DIN EN 60 529 for coupled connector	IP65
金属外壳 IP65 / Metal Hoods & Housings IP65		
材料	Material	铸铝合金 Aluminium die-cast,corrosion resistant
颜色	Colour	灰色 Grey
联锁元件	Locking element	
-联锁方式	-Lever type	金属弹性压合 Lever
-材料	-Material	金属(铁)镀锌 metal galvanized/nickel plating
密封元件	Hoods & Housings seal	NBR
适用温度范围	Limiting temperatures	-40...+125°C
阻燃等级	Flammability acc. to UL 94	V0
防护等级(联锁状态,EN60529)	Degree of protection acc.to DIN EN 60 529 for coupled connector	IP65
3A 高防护外壳 IP68 / Size 3A Pressure tight Hoods & Housings IP68		
表面处理	Surface	喷涂/镀铬 Epoxy power paint/Chromated
材料	Material	铸锌 zinc die-cast
颜色	Colour	黑色/灰色 Black or grey
联锁元件	Locking element	
-联锁方式	-Lever type	螺栓连接 Screw locking
-材料	-Material	不锈钢 Stainless steel
密封元件	Hoods & Housings seal	NBR
适用温度范围	Limiting temperatures	-40...+125°C
阻燃等级	Flammability acc. to UL 94	V0
防护等级(联锁状态,EN60529)	Degree of protection acc.to DIN EN 60 529 for coupled connector	IP68



外壳部分 / Hoods & Housings Contents

耐腐蚀(高环境)外壳 IP65 /		
表面处理	Surface	环氧粉末涂料 Epoxy powder
材料	Material	铸铝合金 Aluminium die-cast, corrosion resistant
颜色	Colour	RAL 9005(黑色Black)
联锁元件	Locking element	
-联锁方式	-Lever type	金属弹性压合 Lever
-材料	-Material	不锈钢 Stainless steel
密封元件	Hoods & Housings seal	NBR
适用温度范围	Limiting temperatures	-40...+125°C
阻燃等级	Flammability acc. to UL 94	V0
防护等级(联锁状态,EN60529)	Degree of protection acc.to DIN EN 60 529 for coupled connector	IP65
EMC电磁兼容外壳 / EMC Electromagnetic Compatibility Hoods & Housings IP65		
材料	Material	铸锌 zinc die-cast
颜色	Colour	
联锁元件	Locking element	
-联锁方式	-Lever type	金属(铁)弹性压合/螺栓连接 Lever/screw locking
-材料	-Material	金属(铁)镀锌 metal galvanized/nickel plating
密封元件	Hoods & Housings seal	NBR
适用温度范围	Limiting temperatures	-40...+125°C
阻燃等级	Flammability acc. to UL 94	V0
防护等级(联锁状态,EN60529)	Degree of protection acc.to DIN EN 60 529 for coupled connector	IP65
高防护外壳 IP68 / Pressure tight Hoods & Housings IP68		
材料	Material	铸铝合金 Aluminium die-cast, corrosion resistant
颜色	Colour	黑色或灰色 Black or grey
联锁元件	Locking element	
-联锁方式	-Lever type	螺栓连接 Screw locking
-材料	-Material	不锈钢 Stainless steel
密封元件	Hoods & Housings seal	NBR
适用温度范围	Limiting temperatures	-40...+125°C
阻燃等级	Flammability acc. to UL 94	V0
防护等级(联锁状态,EN60529)	Degree of protection acc.to DIN EN 60 529 for coupled connector	IP68
HC 金属外壳 IP65 / HC Metal Hoods & Housings IP65		
表面处理	Surface	喷涂/镀铬/镀镍 Epoxy power paint/Chromated/nickeling
材料	Material	铸锌 zinc die-cast
颜色	Colour	黑色/黑色/亚光镍 Black/brushed nickel
联锁元件	Locking element	
-联锁方式	-Lever type	金属弹性压合 Lever
-材料	-Material	不锈钢 Stainless steel
密封元件	Hoods & Housings seal	NBR
适用温度范围	Limiting temperatures	-40...+125°C
阻燃等级	Flammability acc. to UL 94	V0
防护等级(联锁状态,EN60529)	Degree of protection acc.to DIN EN 60 529 for coupled connector	IP65
HC 塑料外壳 IP65 / HCPlastic Hoods & Housings IP65		
材料	Material	聚碳酸酯 Polycarbonate
颜色	Colour	灰白 Light grey(RAL 7032)
联锁元件	Locking element	
-联锁方式	-Lever type	塑料弹性压合 Lever, plastic
-材料	-Material	聚酰胺 Polyamide
密封元件	Hoods & Housings seal	NBR
适用温度范围	Limiting temperatures	-40...+125°C
阻燃等级	Flammability acc. to UL 94	V0
防护等级(联锁状态,EN60529)	Degree of protection acc.to DIN EN 60 529 for coupled connector	IP65

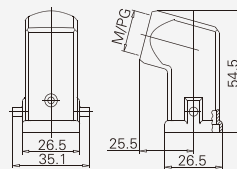
3A 塑料外壳 Plastic Hoods & Housings

防护等级 Degree of protection : IP65

上壳 侧出线 Hoods, side entry



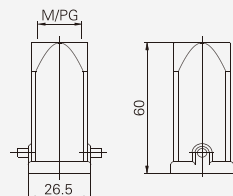
螺纹 Thread	型号 Type	订货号 Part Number
M20	H3A.P-SE-2B-M20	19200030620
PG11	H3A.P-SE-2B-PG11	09200030620



上壳 顶出线 Hoods, top entry



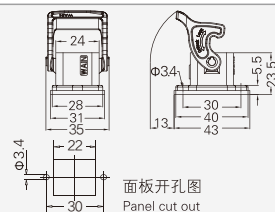
螺纹 Thread	型号 Type	订货号 Part Number
M20	H3A.P-TE-2B-M20	19200030420
PG11	H3A.P-TE-2B-PG11	09200030420



不封底下壳 Housings, bulkhead mounting



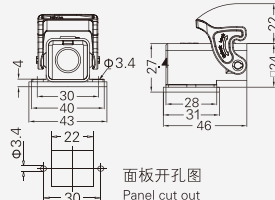
螺纹 Thread	型号 Type	订货号 Part Number
---	H3A.P-BK-1L	09200030320



不封底下壳 Housings, bulkhead mounting



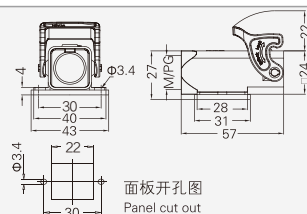
螺纹 Thread	型号 Type	订货号 Part Number
---	H3A.P-BK-1L-SE	09200030820



封底下壳 Housings, surface mounting



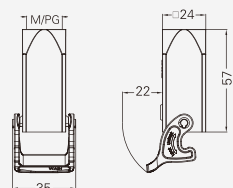
螺纹 Thread	型号 Type	订货号 Part Number
M20	H3A.P-SF-1L-M20	19200030220
PG11	H3A.P-SF-1L-PG11	09200030220



飞线下壳 Housings, cable to cable



螺纹 Thread	型号 Type	订货号 Part Number
M20	H3A.P-CCT-1L-M20	19200030720
PG11	H3A.P-CCT-1L-PG11	09200030720



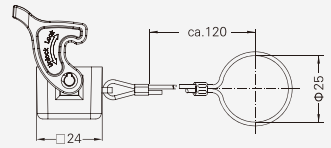
3A 塑料外壳 Plastic Hoods & Housings

防护等级 Degree of protection : IP65

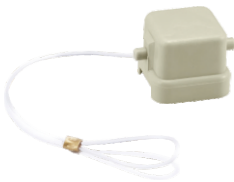
防护盖 Protection covers



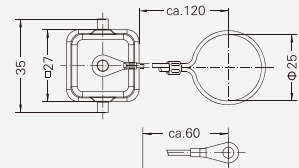
接线方式 Connect way	型号 Type	订货号 Part Number
	H3A-CV-1L/1M (配公芯 for male insert)	09200035442
	H3A-CV-1L/1F (配母芯 for female insert)	09200035441



防护盖 Protection covers



接线方式 Connect way	型号 Type	订货号 Part Number
	H3A-CV-2B/1M (配公芯 for male insert)	09200035448
	H3A-CV-2B/2M (配公芯 for male insert)	09200035446
	H3A-CV-2B/1F (配母芯 for female insert)	09200035447
	H3A-CV-2B/2F (配母芯 for female insert)	09200035445





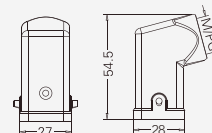
3A 金属外壳 Metal Hoods & Housings

防护等级 Degree of protection : IP65

上壳 侧出线 Hoods, side entry



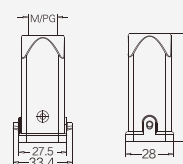
螺纹 Thread	型号 Type	订货号 Part Number
M20	H3A-SE-2B-M20	19200031640
PG11	H3A-SE-2B-PG11	09200031640



上壳 顶出线 Hoods, top entry



螺纹 Thread	型号 Type	订货号 Part Number
M20	H3A-TE-2B-M20	19200031440
PG11	H3A-TE-2B-PG11	09200031440
PG13.5	H3A-TE-2B-PG13.5	09200031441

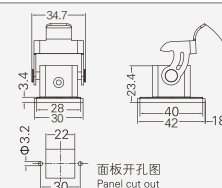


新增M25新品, 详见P11-09 (New M25 products, see P11-09)

不封底下壳 Housings, bulkhead mounting



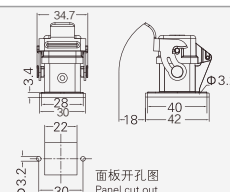
螺纹 Thread	型号 Type	订货号 Part Number
---	H3A-BK-1L	09200030301


 面板开孔图
 Panel cut out

不封底下壳 Housings, bulkhead mounting



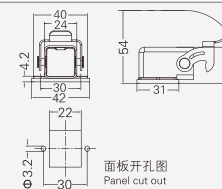
螺纹 Thread	型号 Type	订货号 Part Number
---	H3A-BK-1L-MCV/M (配公芯for male insert)	09200030305
---	H3A-BK-1L-MCV/F (配母芯for female insert)	09200030306


 面板开孔图
 Panel cut out

不封底下壳 Housings, bulkhead mounting



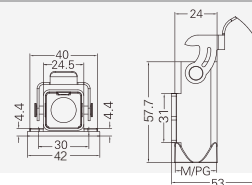
螺纹 Thread	型号 Type	订货号 Part Number
---	H3A-BK-1L-SE	09200030801


 面板开孔图
 Panel cut out

封底下壳 Housings, surface mounting



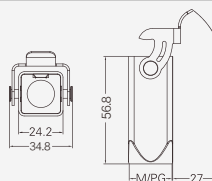
螺纹 Thread	型号 Type	订货号 Part Number
M20	H3A-SF-1L-M20	19200031250
PG11	H3A-SF-1L-PG11	09200031250
PG13.5	H3A-SF-1L-PG13.5	09200031251
底部封闭 Bottom closed		
M20	H3A.BC-SF-1L-M20	19200031252
Pg11	H3A.BC-SF-1L-PG11	09200031252
PG13.5	H3A.BC-SF-1L-PG13.5	09200031253



飞线下壳 Housings, cable to cable



螺纹 Thread	型号 Type	订货号 Part Number
M20	H3A-CCT-1L-M20	19200031750
PG11	H3A-CCT-1L-PG11	09200031750
PG13.5	H3A-CCT-1L-PG13.5	09200031751



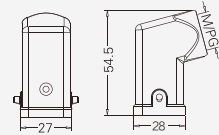
3A 金属外壳(EMC) Metal Hoods & Housings

防护等级 Degree of protection : IP65

上壳 侧出线 Hoods, side entry



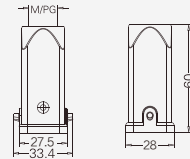
螺纹 Thread	型号 Type	订货号 Part Number
M20	EMC.H3A-SE-2B-M20	19620031640
PG11	EMC.H3A-SE-2B-PG11	09620031640



上壳 顶出线 Hoods, top entry



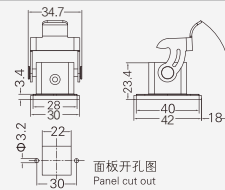
螺纹 Thread	型号 Type	订货号 Part Number
M20	EMC.H3A-TE-2B-M20	19620031440
PG11	EMC.H3A-TE-2B-PG11	09620031440



不封底下壳 Housings, bulkhead mounting



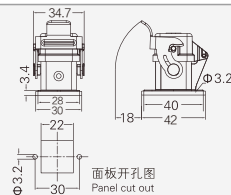
螺纹 Thread	型号 Type	订货号 Part Number
---	EMC.H3A-BK-1L	09620030301



不封底下壳 Housings, bulkhead mounting



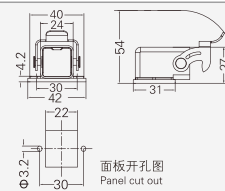
螺纹 Thread	型号 Type	订货号 Part Number
---	EMC.H3A-BK-1L-MCV/M (配公芯 for male insert)	09620030305
---	EMC.H3A-BK-1L-MCV/F (配母芯 for female insert)	09620030306



不封底下壳 Housings, bulkhead mounting



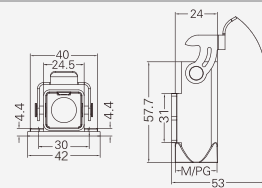
螺纹 Thread	型号 Type	订货号 Part Number
---	EMC.H3A-BK-1L-SE	09620030801



封底下壳 Housings, surface mounting



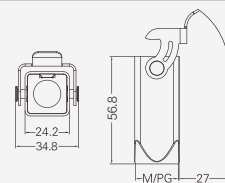
螺纹 Thread	型号 Type	订货号 Part Number
M20	EMC.H3A-SF-1L-M20	19620031250
PG11	EMC.H3A-SF-1L-PG11	09620031250



飞线下壳 Housings, cable to cable



螺纹 Thread	型号 Type	订货号 Part Number
M20	EMC.H3A-CCT-1L-M20	19620031750
PG11	EMC.H3A-CCT-1L-PG11	09620031750





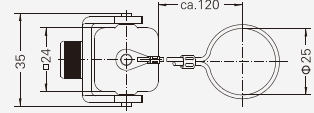
3A 金属外壳 Metal Hoods & Housings

防护等级 Degree of protection : IP65

防护盖 Protection covers



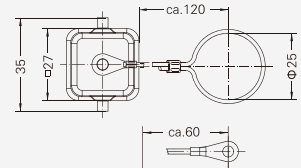
接线方式 Connect way	型号 Type	订货号 Part Number
	H3A-MCV-1L/1M (配公芯 for male insert)	09200035422
	H3A-MCV-1L/1F (配母芯 for female insert)	09200035421



防护盖 Protection covers



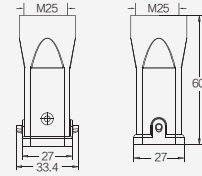
接线方式 Connect way	型号 Type	订货号 Part Number
	H3A-MCV-2B/1M (配公芯 for male insert)	09200035428
	H3A-MCV-2B/2M (配公芯 for male insert)	09200035426
	H3A-MCV-2B/1F (配母芯 for female insert)	09200035427
	H3A-MCV-2B/2F (配母芯 for female insert)	09200035425



上壳 顶出线 Hoods, top entry



螺纹 Thread	型号 Type	订货号 Part Number
M25	H3A-TE-2B-M25	19200031441



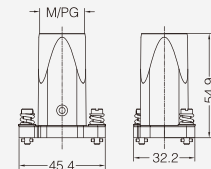
3A 高防护外壳 Pressure tight Hoods & Housings

喷涂/镀铬 Epoxy power paint/Chromated 防护等级 Degree of protection: IP68 H version

上壳 顶出线 Hoods, top entry



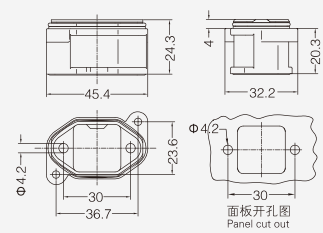
螺纹 Thread	型号 Type	订货号 Part Number
	喷涂 · 螺栓联锁 Epoxy power paint · Screw locking	
M20	HP3A/H-TE-2S-M20	19407030410
PG13.5	HP3A/H-TE-2S-PG13.5	09407030302
	喷涂 · 轴销联锁 Epoxy power paint · Toggle locking	
M20	HP3A/H-TE-2T-M20	19407030400
PG13.5	HP3A/H-TE-2T-PG13.5	09407030402
	镀铬 · 螺栓联锁 Chromated · Screw locking	
M20	C.HP3A/H-TE-2S-M20	19400030410
PG13.5	C.HP3A/H-TE-2S-PG13.5	09400030302
	镀铬 · 轴销联锁 Chromated · Toggle locking	
M20	C.HP3A/H-TE-2T-M20	19400030400
PG13.5	C.HP3A/H-TE-2T-PG13.5	09400030402



不封底下壳 Housings, bulkhead mounting*



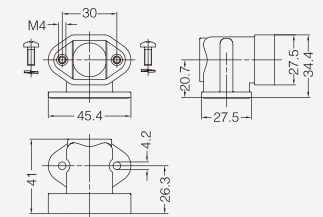
螺纹 Thread	型号 Type	订货号 Part Number
	喷涂 · 螺栓联锁 Epoxy power paint · Screw locking	
---	HP3A/H-BK-2H	09407030311
	喷涂 · 轴销联锁 Epoxy power paint · Toggle locking	
---	HP3A/H-BK-2T	09407030301
	镀铬 · 螺栓联锁 Chromated · Screw locking	
---	C.HP3A/H-BK-2H	09400030311
	镀铬 · 轴销联锁 Chromated · Toggle locking	
---	C.HP3A/H-BK-2T	09400030301



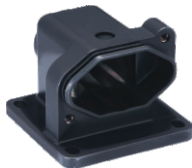
适配器 适用不封底下壳 Adaptor for Housings*



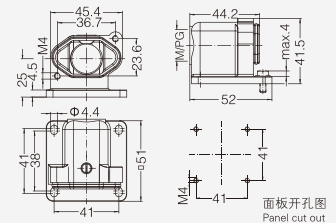
螺纹 Thread	型号 Type	订货号 Part Number
	喷涂 Epoxy power paint	
---	HP3A/H-BK-SE	09407030902
	镀铬 Chromated	
---	C.HP3A/H-BK-SE	09400030902



封底下壳 Housings, surface mounting



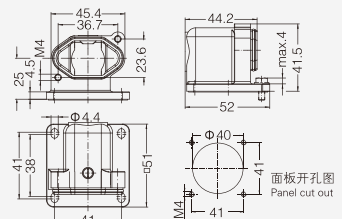
螺纹 Thread	型号 Type	订货号 Part Number
	喷涂 · 螺栓联锁 Epoxy power paint · Screw locking	
M20	HP3A/H-SF-2H-M20	19407030950
PG13.5	HP3A/H-SF-2H-PG13.5	09407030502
	镀铬 · 螺栓联锁 Chromated · Screw locking	
M20	C.HP3A/H-SF-2H-M20	19400030950
PG13.5	C.HP3A/H-SF-2H-PG13.5	09407030602



不封底下壳 Housings, bulkhead mounting



螺纹 Thread	型号 Type	订货号 Part Number
	喷涂 · 螺栓联锁 Epoxy power paint · Screw locking	
---	HP3A/H-SF-2H	09407030950
	镀铬 · 螺栓联锁 Chromated · Screw locking	
---	C.HP3A/H-SF-2H	09400030950





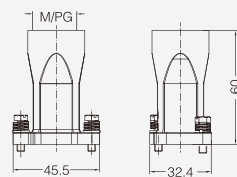
3A 高防护外壳 Pressure tight Hoods & Housings

喷涂/镀铬 Epoxy power paint/Chromated 防护等级 Degree of protection: IP68 H version

上壳 顶出线 高结构 Hoods, top entry, high construction



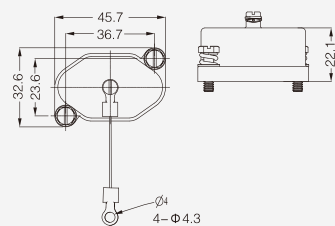
螺纹 Thread	型号 Type	订货号 Part Number
M25	喷涂 · 螺栓联锁 Epoxy power paint · Screw locking HP3A/H-TEH-2S-M25	19407030411
M25	喷涂 · 轴销联锁 Epoxy power paint · Toggle locking HP3A/H-TEH-2T-M25	19407030500
M25	镀铬 · 螺栓联锁 Chromated · Screw locking C.HP3A/H-TEH-2S-M25	19400030411
M25	镀铬 · 轴销联锁 Chromated · Toggle locking C.HP3A/H-TEH-2T-M25	19400030500



防护盖 Protection covers



接线方式 Connect way	型号 Type	订货号 Part Number
---	喷涂 · 螺栓联锁 Epoxy power paint · Screw locking HP3A/H-MCV-2S	09407030501
	HP3A/H-MCV-2S/2S	09407030601
-	喷涂 · 轴销联锁 Epoxy power paint · Toggle locking HP3A/H-MCV-2T	09407030301
	HP3A/H-MCV-2T/2S	09407030701
---	镀铬 · 螺栓联锁 Chromated · Screw locking C.HP3A/H-MCV-2S	09400030501
	C.HP3A/H-MCV-2S/2S	09400030601
---	镀铬 · 轴销联锁 Chromated · Toggle locking C.HP3A/H-MCV-2T	09400030301
	C.HP3A/H-MCV-2T/2S	09400030701



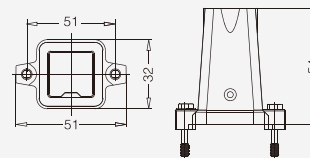
防护等级 Degree of protection: IP68

W version

上壳 顶出线 Hoods, top entry



螺纹 Thread	型号 Type	订货号 Part Number
M20	HP3A-TE-2S-M20	19407031440
PG11	HP3A-TE-2S-PG11	09407031440



不封底下壳 Housings, bulkhead mounting



螺纹 Thread	型号 Type	订货号 Part Number
---	HP3A-BK-2H	09407030308

